

2020-09

LUBE-MASTER FLUID MANAGEMENT



LUBE-Master

FLUID MANAGEMENT SYSTEM

MANUFACTURING AND DEVELOPMENT WITH THE LATEST TECHNOLOGY

 www.eurolube.com

LUBE-Master FLUID MANAGEMENT SYSTEM

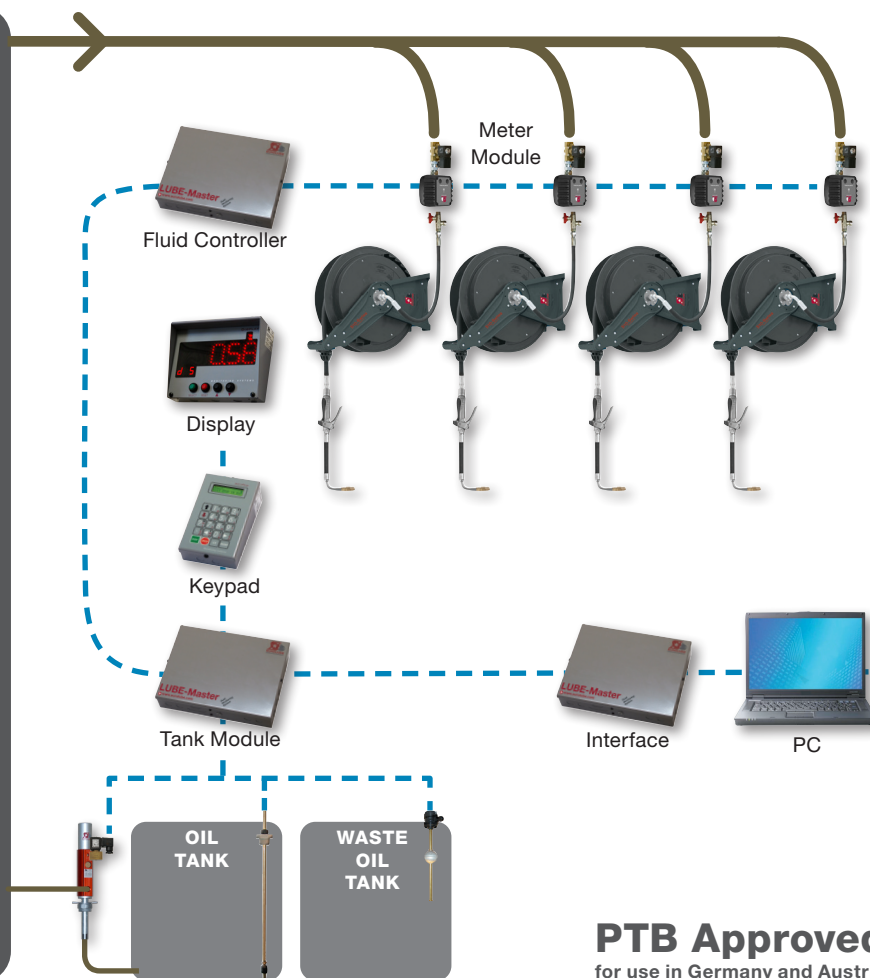
GENERAL

– Exceptional performance Easily interface with your DMS system

LUBE-Master system provides precise metering and dispensing of Oils, coolants and windscreen fluids for automotive and Industrial applications.

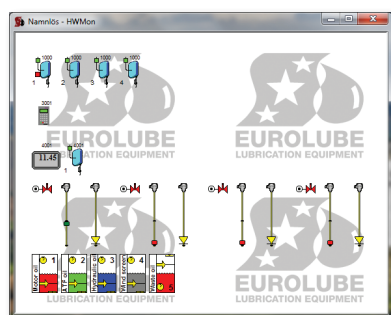
LUBE-Master POWERFUL FEATURES

- Unlimited number of users, job numbers and tanks
- Registers every fluid dispense
- Simple operator interface
- No limit on stored dispenses
- Dispensing can be started from any Keypad, or from the PC.
- Simultaneous dispensing to all points
- Can be remotely controlled over network
- Timeout – closes dispense point if no flow is detected
- Database manager with reports
- Custom reports can be created with MS Excel
- Tanks are monitored in real time
- Tank reports can be sent via e-mail
- Tank monitoring with dry pumping protection
- Pump control, system is pressurized only during dispensing
- Support for bar code, magnet card or dallas key (iButton) readers



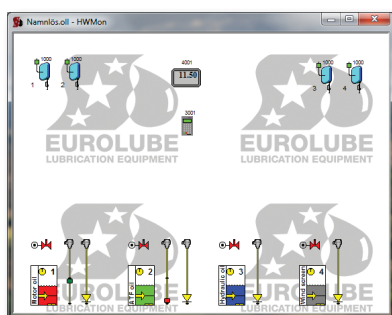
PTB Approved
for use in Germany and Austria

LUBE-Master FLUID MANAGEMENT SYSTEM



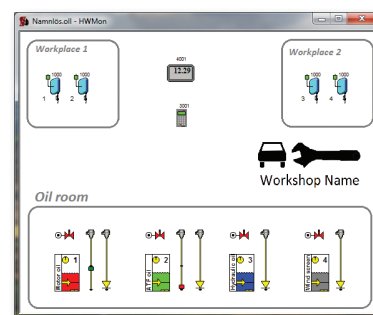
SYSTEM OVERVIEW

All the dispense points, keypads, displays, tanks and level sensors can be viewed graphically in the system. The system can also be activated in this view. All the configuration can also be done from here.



WORKSHOP LAYOUT

You can also easily create a custom layout, where you move the objects around so that they correspond to the physical locations of the tanks and workplaces in the workshop.



DETAILED LAYOUT

You can also customise the overview to show the different products and dispensing points; you can even add your own background and logos.

LUBE-Master FLUID MANAGEMENT SYSTEM

WHY SHOULD YOU INVEST IN A LUBE-MASTER SYSTEM?

LUBE-Master is ideal for workshop profitability – Quick return on investment

Tracking your fluid consumption has never been easier. The LUBE-Master system virtually eliminates fluid loss and most systems pay for themselves in the first year.

See below for an example of how fast a system can pay for itself:

Purchased (Liters)	Sold (Liters)	Loss (Liters)	Payback time #)
30 000	28 500	1 500	4-5 month

The above examples is based on 8 dispensing point for Oil, the following key items are included in the calculations:

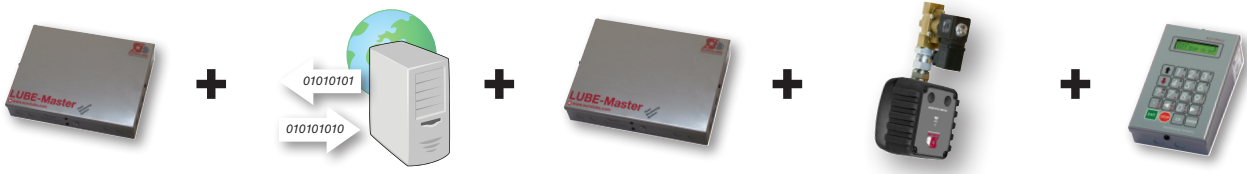
PC Interface

Connection to DMS

Fluid Controllers

Meter modules

Keypads



#) Please note, cost for installation on site is not included. We work on the supposition that the oil system is installed.

CONNECTION TO DEALER MANAGEMENT SYSTEMS / EXTERNAL SYSTEMS

Save money by connecting LUBE-Master and your dealer / inventory / sales / administration system

By installing LUBE-Master you can ensure that no oil is ever lost or unaccounted for.

THE FACTS

With a manual fluid dispensing system it's inevitable that mistakes will occur such as:

- Oil not booked out
- Incorrect volume booked
- Oil booked to the wrong job number
- Top ups of oil or anti-freeze not booked out at all

All these oversights can add up to a substantial loss of revenue.

THE SOLUTION

By using LUBE-Master interfaced with your Dealer Management System (DMS), these mistakes are eliminated. The 2 way flow of information between LUBE-Master and the DMS means that only an active job or WIP number entered into the system through the remote keypads will allow any fluids to be dispensed. Once dispensed all the fluids used on that job or WIP number are collected by the DMS and automatically posted to the invoice thus eliminating the possibility of human error.

WE TAKE CARE OF IT

We do all the work ourself. When the LUBE-Master installation is complete, the interface with your DMS works straight away. This means there is:

- No lengthy wait for your DMS supplier to find time to carry out the work.
- Normally no additional cost for the integration.




Currently we have over 60 different links to Dealer Management Systems that are programmed to work perfectly with minimal configuration. Several of the Dealer Management Systems LUBE-Master can interface with are shown in the illustration but there are many others. Please contact us for a comprehensive list.




SET UP A CONNECTION IN 5 MINUTES

If a driver doesn't exist, we have generic drivers for text file export, database export (ODBC), XML file, Excel file etc. These drivers can also be customized to suit your needs in a few minutes, by editing a single configuration file.



MODULES


PART.NO.	DESCRIPTION
 53400	Fluid Controller Measures and controls up to four solenoid valves and pulse meters. Each port can be configured individually.
 53401	Keypad For starting and stopping dispenses and interacting with the system from the workshop floor. A bar code, magnet card or dallas key reader can also be installed to simplify and speed up input.
 53404	LED Display Enables a user to see how much is being filled in a system from a distance. The display also contains a single dispense point as well.

PART.NO.	DESCRIPTION
 53408	Tank Control Module Monitors tank levels via float level sensors or in real time with analogue pressure sensors. It also controls solenoid valves for air to the pumps, ensuring that the system is never pressurized when not in use.
 53403	Software & Interface The link between the hardware and the software. Enables a user to configure and manage the system. It also opens the door to a whole new world of possibilities in regards to data exchange with external systems.
 53402	Printer Module If the system is run without a PC, a Printer Module can store up to 900 transactions. A receipt printer can also be connected to print a receipt every time a dispense is made.

METER MODULES




METER MODULE FOR OIL AND ANTIFREEZE
 Up to 20l/min
 PART NO 1168465
 In 1/2" (F)
 Out 1/2" (M)



HIGH VOLUME METER MODULE FOR OIL/DIESEL
 Up to 50l/min
 PART NO 1168969
 In 1" (F)
 Out 1/2" (F)






STAINLESS STEEL METER MODULE
 Up to 35l/min
 PART NO 1168466
 In 1/2" (F)
 Out 1/2" (F)






METER MODULE FOR GREASE
 Up to 1kg/min
 PART NO 2168915
 In 1/4" (F)
 Out 1/4" (F)

OTHER COMPONENTS

RECOMMENDED

PART NO	DESCRIPTION
 53411	Communication cable, connects between modules
 53393	Signal cable, connects meter modules with fluid controller
 16764	Pressure relief valve kit Prevents damage to pulse meters caused by thermal expansion in the pipe system

OPTIONAL

PART NO	DESCRIPTION
 53407	Bar code reader
 53409	Magnet card reader
 53419	Dallas iButton reader
53415	Serial port kit



- Eurolube is a Swedish brand specializing in the manufacture, distribution, and support of environmentally-friendly products and tailor-made complete and professional solutions for the handling of lubricants and other fluids.
- We offer a full range of services from simple advice to fully integrated systems tailored to the needs of each customer.

EUROLUBE EQUIPMENT AB

by Alentec & Orion AB, Grustagsvägen 4, SE-138 40 Älta, Sweden

EMAIL eurolube@alentec.se PHONE +46 8 747 67 10 FAX +46 8 715 20 74